

# Support for Japanese



**JAPAN**FOUNDATION

Josephine Austin

**Japan Foundation**

Josephine.Austin@jpf.org.uk

[www.jpf.org.uk/language](http://www.jpf.org.uk/language)

# Support

available from the Japan Foundation



Support

# Funding from the Japan Foundation



- **Local Project Support Programme** – up to £3,000 – 4 deadlines a year

## Funding from other organisations

- **Daiwa Anglo-Japanese Foundation**  
Grants of £3000+ for activities promoting Japan-UK interaction
- **Great Britain Sasakawa Foundation**  
For Japanese language projects
- **Japan Society Small Grant**  
Up to £1,000 for small-scale events related to Japan



## Funding hints:

1. Please tell us about your project and its objectives, including quantitative data where possible.
2. How will the project be publicised?
3. What outcomes will the project achieve?  
*How will the project impact Japanese language education in the UK?*



# Funding hints:



# Support

## Expenditure

(Currency: £)

Item	Amount	Breakdown
Travel and accommodation expenses		
Project staff costs / Honoraria		
Venue hire		
Publicity		
Costs of Japanese teaching materials *		
Other expenses		
<b>Total</b>		

*\*Please be aware we are usually unable to provide internal printing/photocopying costs as it is difficult to demonstrate proof of payment for these expenses. We are also unable to provide funding for any food or drink.*

# Funding hints:



Support

Income			(Currency: £)	
Item	Amount	Breakdown		
Requested Japan Foundation Grant				
Contributions from other organisations Name of organisation:		Status of application (tick)		
Other income:			(In progress)	(Confirmed)
Own funds				
<b>Total</b>				

(Please ensure that the total expenditure matches the total income.)



*“Even a journey of a thousand miles  
begins with the first step.” - Japanese proverb*

## Japan Group Tour Programme for UK Head Teachers

An exciting opportunity for UK Head Teachers to travel to Japan and learn about Japanese education and culture, funded by the Japan Foundation.



Support



# Resources



# Free Online Resources from the Japan Foundation



## Erin's Challenge! I Can Speak Japanese

[www.erin.ne.jp](http://www.erin.ne.jp)

- Great introduction to basic Japanese
- Designed with young people in mind
- Features videos, comics, activities and games for teaching Japanese language and culture
- For independent or classroom use
- DVD and workbooks also available



Resources

# Free Online Resources from the Japan Foundation



**Marugoto  
Plus**  
[www.marugotoweb.jp/](http://www.marugotoweb.jp/)



**Resources**

- Great introduction to basic Japanese
- Topics based on Can-do statements
- Features lots of videos, grammar explanations activities and games for teaching Japanese language and culture
- For independent or classroom use
- DVD and workbooks also available

# Free Online Resources from the Japan Foundation



## Japanese in Anime & Manga

[www.anime-manga.jp](http://www.anime-manga.jp)

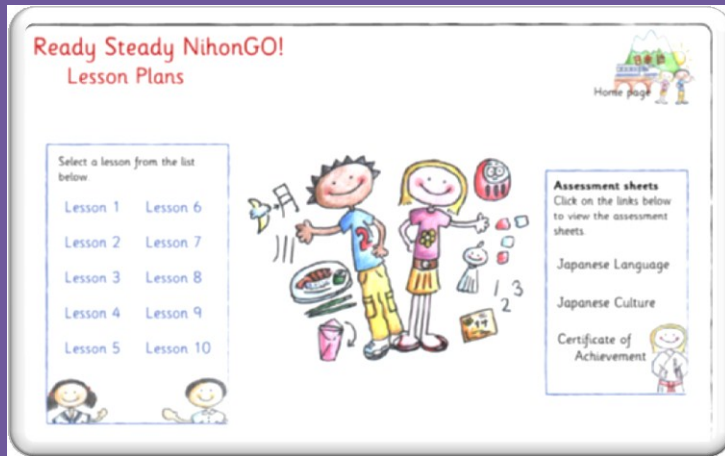


- Free Japanese language learning website, especially for fans of Japanese cartoons and comics
- Full of games, audio files, cultural facts and Japanese not found in textbooks
- Ideal for independent learners
- Variety of Japanese levels supported

# Free Online Resources from the Japan Foundation



## Resources



## Ready Steady NihonGO!

[www.japansociety.org.uk/rsn/](http://www.japansociety.org.uk/rsn/)

- Originally designed for KS2
- Lesson plans plus supporting flashcards and audio files
- Great for classroom use, especially for short tasters
- Free to use online; inexpensive CD-ROM also available

# Free Online Resources from the Japan Foundation



## Nihongo-e-na

[www.nihongo-e-na.com](http://www.nihongo-e-na.com)



# Resources

- Web portal for selected Japanese language education websites
- Multiple language levels supported
- Extremely easy to use
- Fantastic for both independent learners and teachers

# Free Online Resources from the Japan Foundation



## Minna no Kyozaï Site

[www.minnanokyozaï.jp](http://www.minnanokyozaï.jp)

- For Japanese teachers to find and exchange resources
- Includes classroom activities, pictures, grammar explanations and reading comprehension texts
- Also includes teacher's forum
- Registration quick & free



Resources

# JF Scheme of Work



- JSOW is based on The National Curriculum in England, 2013 and consists of tasks of A1 level
- Contains lesson plans, supplementary resources, target vocabulary and teaching tips
- Please let us know what you think!





# Other Free Resources

## ✓ Japan Foundation Resource Collection



**JAPAN FOUNDATION LONDON**

Contact Us | Sitemap | Google Custom Search

Home | About Us | What's On | News | Funding | FAQs | Links

### Japanese Language

Arts & Culture | Japanese Language | Japanese Studies & Intellectual Exchange | Library

you are here: [Home](#) > [Language Centre](#) > Teaching Resources

#### Japanese Language Navigation

- Japanese Language Home
- What's On
- Primary Japanese Campaign
- Funding
- News
- Courses & Events
- Teaching and Learning Resources
- Exams
- Teaching Jobs
- Private Tutors
- Japanese Taster for Schools (JTS) Programme
- UK schools teaching Japanese
- Links

#### Teaching and Learning Resources

Wherever possible we have tried to credit the creators of all resources featured here. You can download them and use them instantly with your class, or adjust them to your needs.

The Japan Foundation welcomes your feedback on the resources featured on the website. Please email your comments to [info.language@jpf.org.uk](mailto:info.language@jpf.org.uk). Please note we cannot guarantee the quality of resources made by other creators.

Resources created by the Japan Foundation

Resources funded by the Japan Foundation's [Japanese Language Local Project Support Programme](#)

- Featured Websites
- Script
- Primary
- GCSE
- GCE (AS & A2)
- Higher Education & Adult Education
- Other Resources
- [The Japan Foundation London Japanese Language Advisors](#)

**Featured Websites**

Send this page to somebody  
Print this page

**Nihongo Corner**

たいふう  
台風  
Typhoon

台: Platform  
風: Wind  
台風が吹き荒れています。

Click to see a new word!

**JAPAN FOUNDATION LONDON**

Contact Us | Sitemap | Google Custom Search

Home | About Us | What's On | News | Funding | FAQs | Links

### Library

Arts & Culture | Japanese Language | Japanese Studies & Intellectual Exchange | Library

you are here: [Home](#) > Library

#### Library Navigation

- Library Home
- Library Links

Welcome to the Japan Foundation London Library

**IMPORTANT INFORMATION:**

As of April 2015, the book loan service for Full Members has been resumed although our library is still closed due to our relocation to a temporary office. Unlike the previous library there is no space for a reference area, so we are unable to receive visitors to our office without prior appointment for receiving materials. While we are located at the temporary office, the reference service for Reference members has been suspended.

For any enquiries related to the library, please contact Japanese Language Resource Officer Naomi Yano at [naomi.yano@jpf.org.uk](mailto:naomi.yano@jpf.org.uk)

- Who is the book loan service for?
- The Collection
- How to use the Loan Service
- Loan by Post

[www.jpf.org.uk](http://www.jpf.org.uk)



Resources

# Japanese Taster Lesson Sample Activity Pack



## Language Based Classroom Activities

Section	Content
<a href="#">Language Activity 1</a>	Japanese greetings and bowing. NOTE: This file contains video clips and is over 40MB in size. It may take some time to download.
<a href="#">Language Activity 2</a>	Japanese numbers and games using numbers
<a href="#">Language Activity 3</a>	Introduction to hiragana with games and songs
<a href="#">Language Activity 4</a>	Body parts, directions and colours
<a href="#">Language Activity 5</a>	Self-Introduction and bowing

## Culture Based Classroom Activities


Section	Content
<a href="#">Culture Activity 1</a>	Tanabata
<a href="#">Culture Activity 2</a>	Sports
<a href="#">Culture Activity 3</a>	Christmas and New Year
<a href="#">Culture Activity 4</a>	Fukuwarai, Setsubun and Hina-matsuri.
<a href="#">Culture Activity 5</a>	Mother's Day, Koi-nobori, janken and kabuto



# Japan Society online resources






## Resources



[About](#)
[Events](#)
[Resources](#)
[Schools](#)
[Grants](#)
[Join](#)
[Opportunities](#)

THE JAPAN SOCIETY

### Search

### Schools

- Photography Project
- School Links
- Japan UK LIVE
- Japan in Your Classroom
- Resources
- Downloads**
  - Agriculture in Japan
  - A Resource Pack for Primary Schools
  - Earthquakes
  - Haiku for the Literacy Hour
  - Haiku: Beyond 5-7-5
  - Japan in Geography at KS1
  - Mrs Aoyama's Farm – Case Study
  - Origami in Maths
  - Photobank
  - Plan Your Own Matsuri
  - Ready Steady NihonGO! A 10 lesson course in spoken Japanese
  - Setsubun: Traditional story and activities
  - Shinto: the Way of the Gods
  - Soroban: The Japanese Abacus
  - Taiko Drumming
  - Traditional Theatre
  - Using Kamishibai
  - What's it Like to Live in Japan? – a Photo Enquiry

### Downloads

These downloadable resources have been designed for teachers to use in their schools and may be used freely in that context only.

Other teaching ideas can be found in past issues of our newsletter, **Japan in Focus**.

If you have any comments on the resources, ideas for other useful classroom materials, or experience problems downloading or viewing the resources, please email [us](#).

Title of Resource	Main Curriculum Area(s)	Target Age
<b>A resource pack for Primary Schools</b>	Geography	KS2
<b>Agriculture in Japan</b>	Geography, environmental studies – people & place	KS3 & 4P7 – S2
<b>Earthquakes</b>	Geography	KS3
<b>Haiku for the Literacy Hour</b>	Literacy	Upper KS2
<b>Haiku: Beyond 5-7-5</b>	Literacy	KS2 up
<b>Japan in Geography at KS1</b>	Geography	KS1
<b>Mrs Aoyama's Farm- a Case Study</b>	Geography	KS3
<b>Origami in Maths</b>	Maths, Art	KS1 & 2
<b>Photobank</b>	Visual resources, varied subjects	Any
<b>Plan Your Own Matsuri</b>	Multi-cultural day / week	Any
<b>Ready Steady NihonGO! A 10 lesson course in spoken Japanese</b>	MFL	K2
<b>Setsubun</b> Traditional story and activities	Literacy	KS1 & 2
<b>Shinto: the Way of the Gods</b>	RE, Citizenship	KS3 up
<b>Soroban: the Japanese Abacus</b>	Maths, numeracy	KS1 up
<b>Taiko Drumming</b>	Music	Any
<b>Traditional Theatre</b>	Drama, literacy, ICT	KS3
<b>Using Kamishibai</b> Traditional storyboards	Literacy	KS1 & 2
<b>What's it Like to Live in Japan? – a Photo Enquiry</b>	Geography	KS2

### Upcoming Events

«

October 2015

»

MON	TUE	WED	THU	FRI	SAT	SUN
			1	2	3	4
5	6	7	8	9	10	11
12	13	14	15	16	17	18
19	20	21	22	23	24	25
26	27	28	29	30	31	

**The Olympus scandal – has anything changed since then?**  
With Michael Woodford

26 October — 6:00 pm

**Japan Room Lecture: Kyoto's International Links**

29 October — 6:30 pm

**Yoichi Masuzoe, Governor of Tokyo: Creating the Future City – Tokyo's Vision and Action**

30 October — 4:00 pm

### Contact

Email Us

Tel: 020 7935 0475

The Japan Society  
121, 122, 123, 124, 125, 126, 127, 128, 129, 130, 131, 132, 133, 134, 135, 136, 137, 138, 139, 140, 141, 142, 143, 144, 145, 146, 147, 148, 149, 150, 151, 152, 153, 154, 155, 156, 157, 158, 159, 160, 161, 162, 163, 164, 165, 166, 167, 168, 169, 170, 171, 172, 173, 174, 175, 176, 177, 178, 179, 180, 181, 182, 183, 184, 185, 186, 187, 188, 189, 190, 191, 192, 193, 194, 195, 196, 197, 198, 199, 200



# Japan Society - Kamishibai



<http://japaneseclubprimary.blogspot.co.uk/p/kamishibai.html>



<http://www.japansociety.org.uk/schools/resources/downloads/using-kamishibai/>



Resources

# Activity chest / Artifact sets



<http://www.japansociety.org.uk/schools/resources/borrow/>



<http://www.uk.emb-japan.go.jp/en/embassy/artefacts.html>

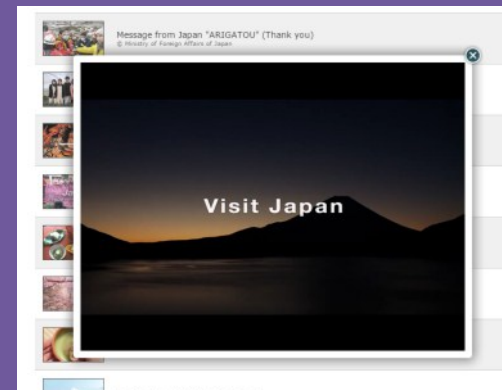
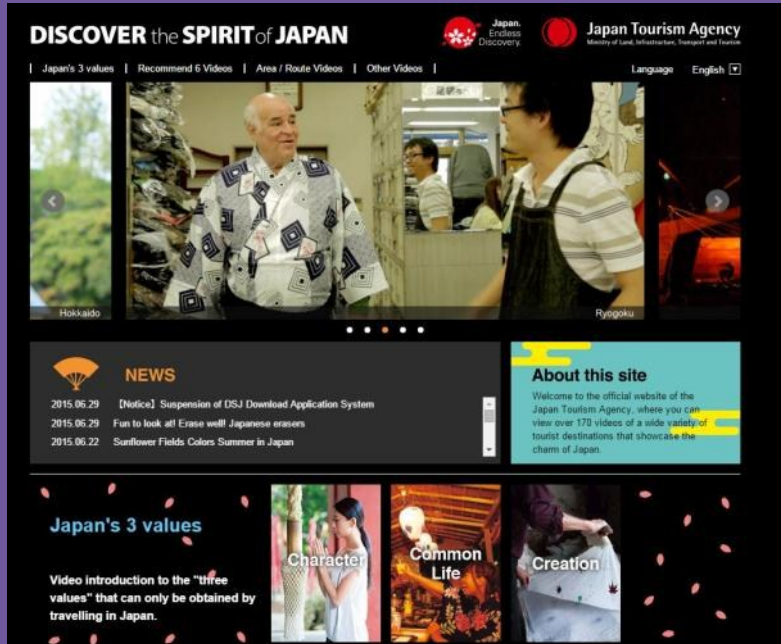




# Activity chest / Artifact sets



## Resources



<http://www.visitjapan.jp/en/>

<http://us.jnto.go.jp/map/>

# Courses for Non-Native Teachers of Japanese

- **J-Basic Online for Teachers**  
8 Week online course  
Ideal for teachers to brush up their basic Japanese
- **Summer Refresher Courses**
- **Japanese Plus**  
4 week course, several times a year  
For advanced, non-native speakers
- **Longer training courses in Japan**  
2-month and 6-month courses  
Suitable for teachers with intermediate Japanese
- **Hakuho Foundation's course**  
Trip to Japan for teachers course  
Plus fully funded trip to Japan for your students





# Networking

> JF News

> JLE-UK

Email discussion group for anyone interested in teaching Japanese

> **Make contact** with schools in your area

> ALL has a networking group for Teachers of Japanese - JLC

> **Specialist advice** - just ask our language advisors!

> **Japan Foundation Facebook:**  
JapanFoundationLondon

> **Japan Foundation on Twitter:**  
jpflondon



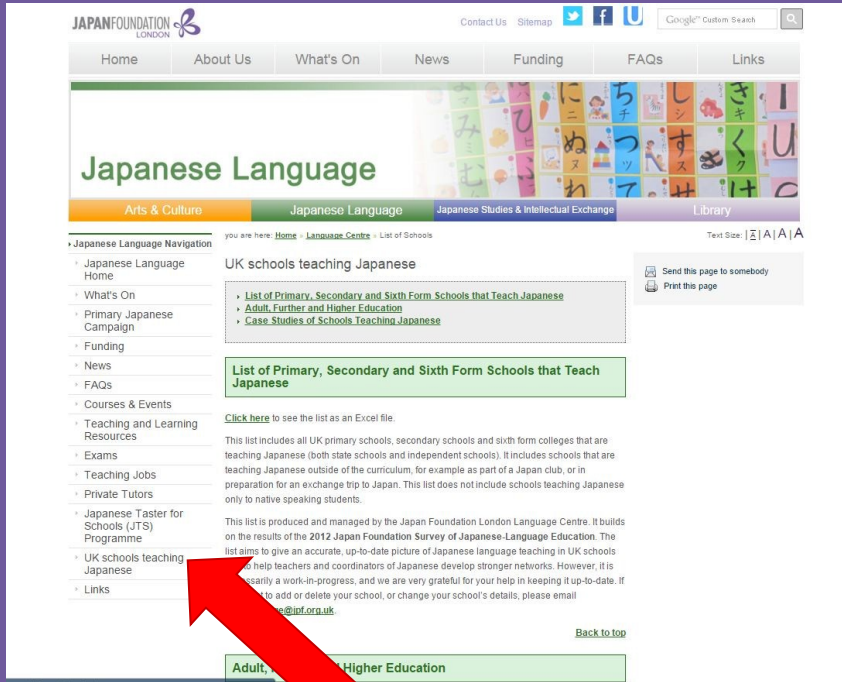
## Sign up today!



# Networking

# Networking

## > List of Schools



The screenshot shows the Japan Foundation London website. The main header includes the logo and navigation links: Home, About Us, What's On, News, Funding, FAQs, and Links. Below the header is a large banner for 'Japanese Language' with sub-sections: Arts & Culture, Japanese Language, Japanese Studies & Intellectual Exchange, and Library. A sidebar on the left contains a 'Japanese Language Navigation' menu with links to Home, What's On, Primary Japanese Campaign, Funding, News, FAQs, Courses & Events, Teaching and Learning Resources, Exams, Teaching Jobs, Private Tutors, Japanese Taster for Schools (JTS) Programme, UK schools teaching Japanese, and Links. The main content area is titled 'UK schools teaching Japanese' and features a link to 'List of Primary, Secondary and Sixth Form Schools that Teach Japanese'. A red arrow points to this link.

## > Case Studies



### Case studies of UK schools teaching Japanese

#### NEW! St Edmund Campion Catholic Primary School, Maidenhead



Pupils at St Edmund Campion Catholic Primary School study Japanese, Latin, French, and Spanish. In 2014-2015 Japanese was the main language studied by Year 4 and Year 5, a total of 105 children. The children have responded very positively to learning Japanese. They look forward to their weekly class and actively participate in lessons. The school also received positive feedback from parents who have enjoyed learning Japanese from their children. [Click here to read the full case study.](#)

#### Hartley Primary School



Hartley Primary School has been teaching Japanese as part of the creative curriculum since 2013. These classes are very much pupil-led, with the children deciding what they would like to learn each week. [Click here to read the full case study.](#)

#### Luton Sixth Form College



Japanese was introduced into Luton Sixth form in September 2011 for a class of enthusiastic sixth formers during lesson time, and also for pupils from the surrounding secondary schools as an after school class. Students have been working towards the Asset Languages Breakthrough exams and have worked together to create a fantastic Japan related website for the [Japan Webpage Contest for Schools](#). [Click here](#) to read the full case study.

#### Netherthong Primary School



# Japanese events for schools

## > Japan In Your Classroom culture taster

(Japan Society)

## > Japan Taster for Schools

## > Club Taishikan (Embassy of Japan)

- Very popular so book well in advance



Motivate Students

# Japan Webpage Contest for Schools

This was open to any UK primary or secondary school that is teaching Japanese or doing any kind of project related to Japan.

Really good place to find ideas to try with your own classes...



<http://www.japanwebpagecontest.org.uk/>



Motivate Students

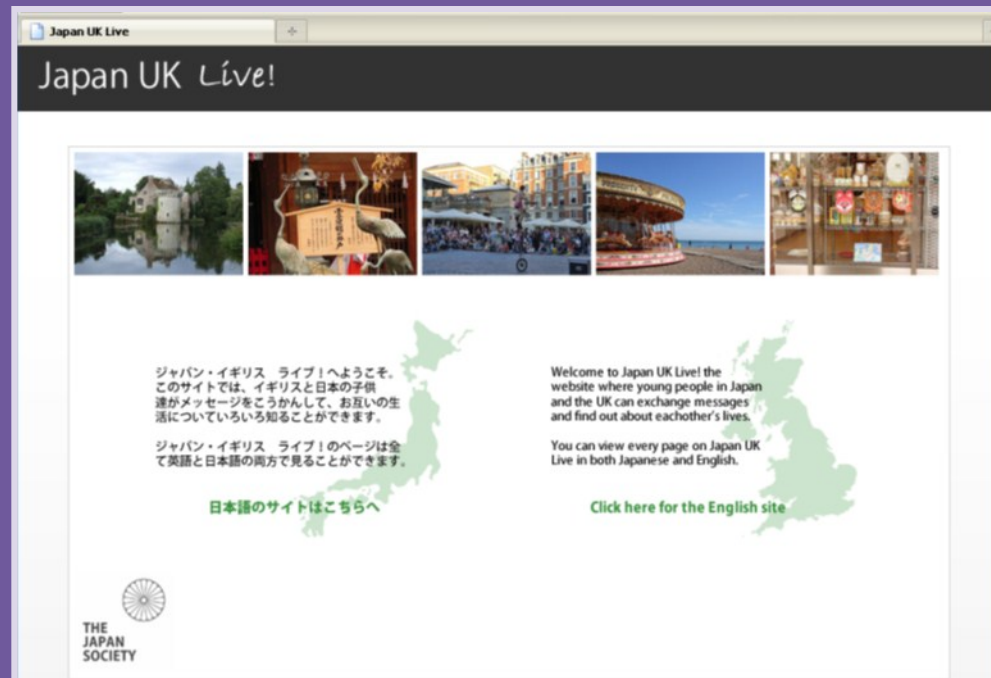
# School partnerships

## > Partner Finding / Japan Links

(Japan Society)

## > Japan UK LIVE!

Bilingual website to help  
students communicate  
(Japan Society)



Motivate Students





# Survey Time!

# Useful contacts

## > Japan Foundation London (Language Centre)

[www.jpfl.org.uk/language](http://www.jpfl.org.uk/language)

Tel: 020 7436 6698

## > Japan Society

[www.japansociety.org.uk](http://www.japansociety.org.uk)

Tel: 020 7828 6330

## > Embassy of Japan (JICC)

[www.uk.emb-japan.go.jp](http://www.uk.emb-japan.go.jp)

Tel: 020 7465 6500

## > British Council

[www.britishcouncil.org](http://www.britishcouncil.org)

Tel: 020 7930 8466

## > Daiwa-Anglo Japanese Foundation

[www.dajf.org.uk](http://www.dajf.org.uk)

Tel: 020 7486 4348

## > Great Britain Sasakawa Foundation

[www.gbsf.org.uk](http://www.gbsf.org.uk)

Tel: 020 7436 9042







# 質問？

(Any questions?)